

253 10TH STREET E, NORTH VANCOUVER

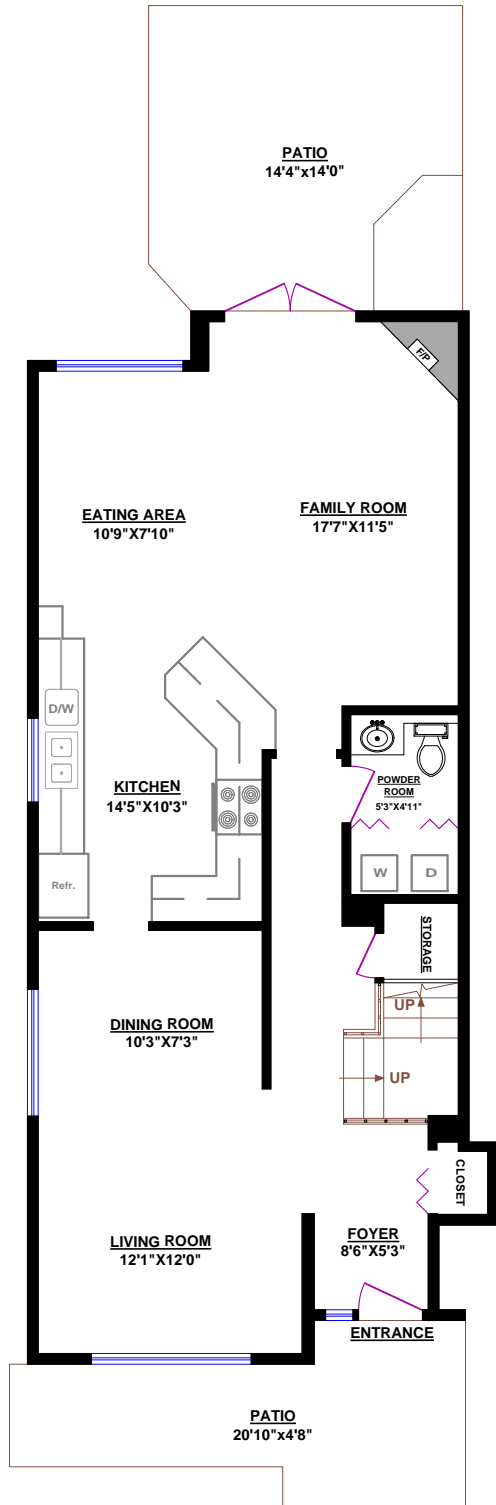
TOTALS*
 Main Floor (finished): 935 sq.ft.
 Upper Level (finished): 795 sq.ft.
 TOTAL FINISHED: 1,730 sq.ft.
 TOTAL UNFINISHED: 0 sq.ft.
 GRAND TOTAL: 1,730 sq.ft.

OTHER AREAS:
 Garage: 450 sq.ft.
 Roof Top Deck: 200 sq.ft.

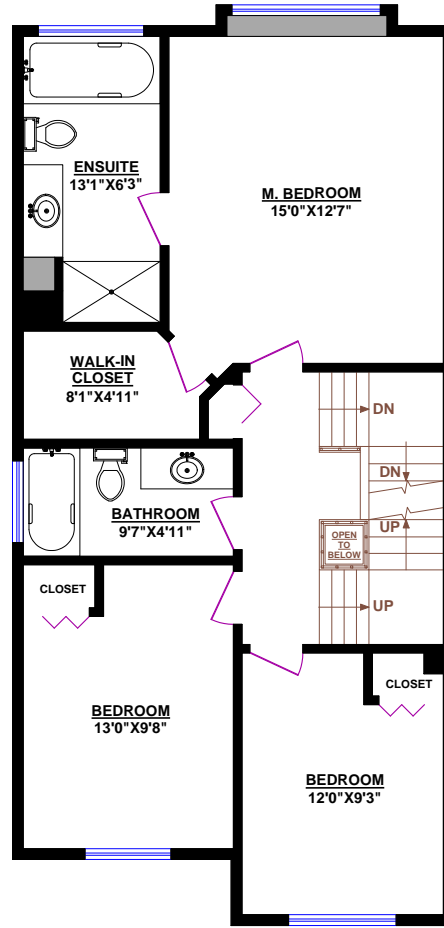
* Measured to exterior of walls and to the middle of the common walls
 * These measurements are not taken from the Strata Plan.



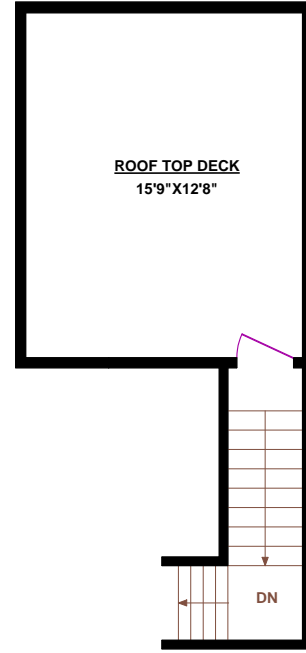
Prudential Sussex Realty
 2397 Marine Drive
 West Vancouver, BC V7V 1K9
 604.833.8080
 www.jasonjennings.com



MAIN FLOOR



UPPER LEVEL



ROOF TOP DECK

