

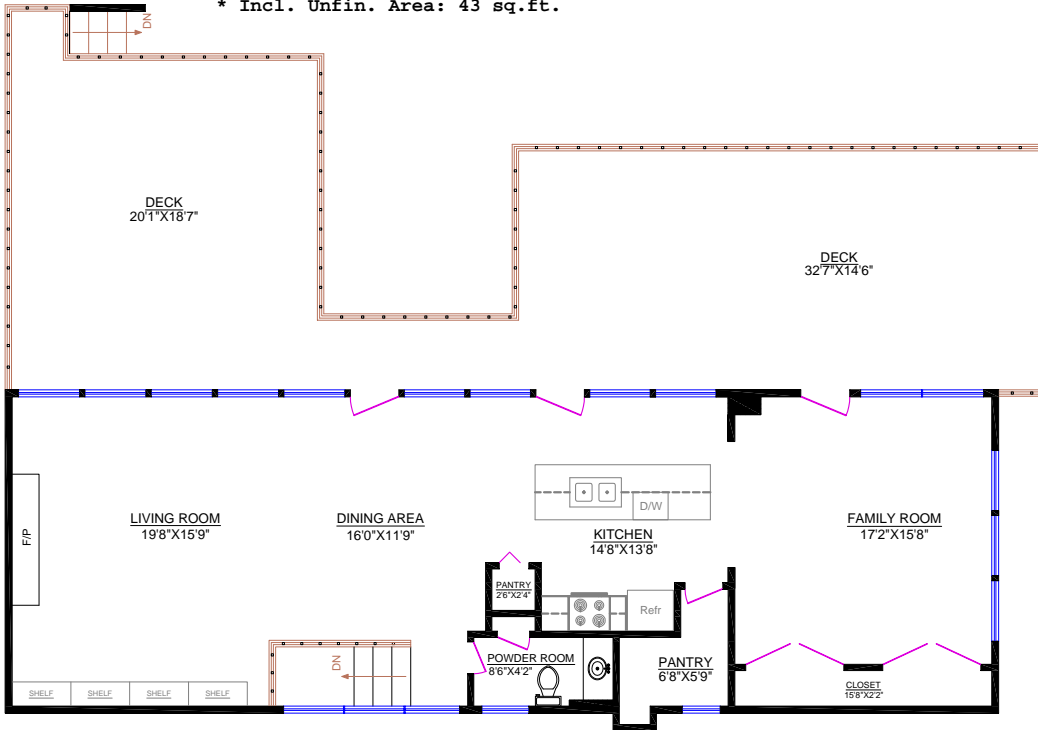
2397 Marine Drive
West Vancouver, BC V7V 1K9
(604) 925-2911
www.johnjennings.com

1930 ORCHARD WAY, WEST VANCOUVER

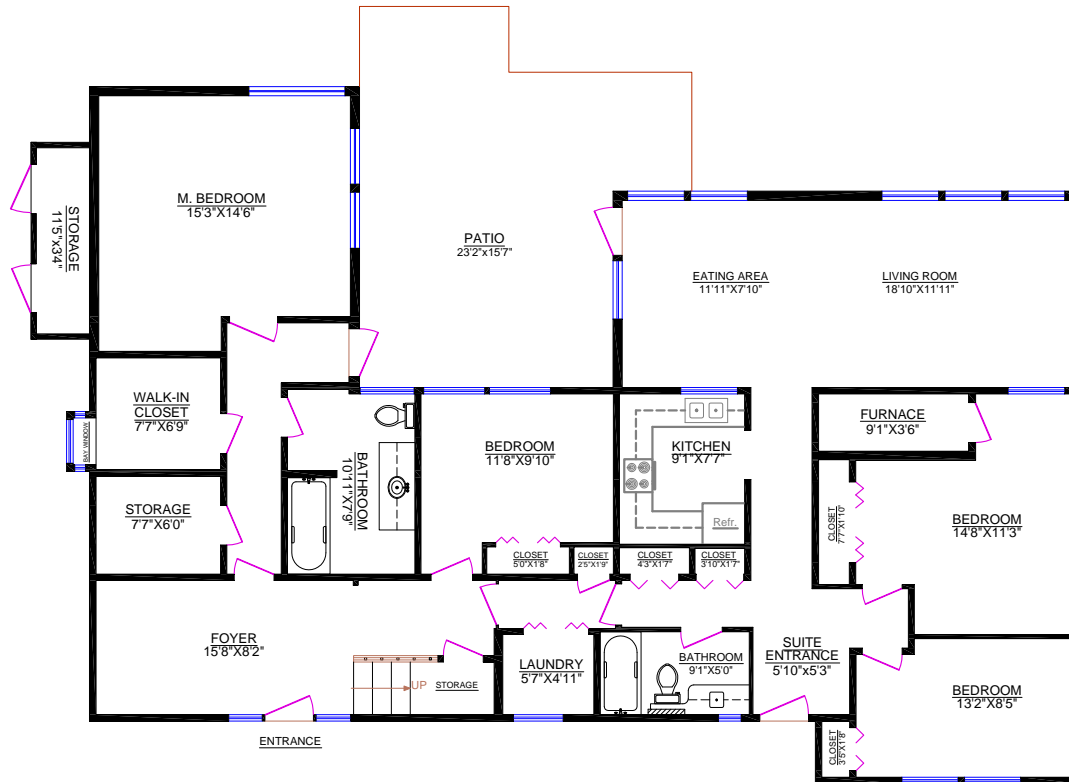
Main Floor*: 1,935 sq.ft.
Upper Level: 1,236 sq.ft.
TOTAL: 3,171 sq.ft.

OTHER AREAS:
Decks: 908 sq.ft.
Patio: 366 sq.ft.
Storage: 43 sq.ft.

* Incl. Unfin. Area: 43 sq.ft.



UPPER LEVEL



MAIN FLOOR